

COPPER PATCH CORD

THE COPPER PATCH CABLE, PATCH CORD OR PATCH LEAD IS AN ELECTRICAL USED TO CONNECT (PATCH IN) ONE ELECTRONIC TO ANOTHER FOR SIGNAL ROUTING. DEVICES OF DIFFERENT TYPES (A SWITCH CONNECTED TO A COMPUTER, OR A SWITCH TO A ROUTER) ARE CONNECTED WITH PATCH CORDS



PATCH CORD CAT6 UTP PVC 0.30M RED

NS-106UTP-RE-0.30M

DESCRIPTION

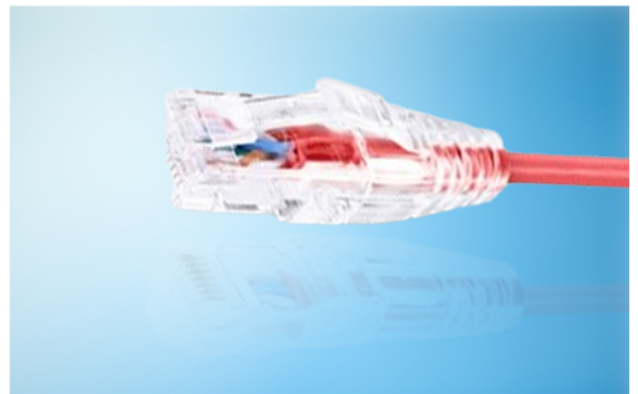
Patch Cord Cat6 UTP 550Mhz 24AWG 50um Gold Plated Contacts 0.30M PVC Red Jacket

FEATURES

- Guaranteed performance Tested UP TO 550MMhz.
- The particular saw-tooth design of jacket towards inner can enhance the resistance of alien crosstalk.
- The unique design of PE cross reduces the NEXT, RL and provides better transmission.
- Superior cable flexibility from stranded cores.
- Boot maintains correct bend radius to ensure maximum performance.
- Connector: 8P8C , RJ45, 50 um gold plating.
- Flame Retardant is verified according to IEC 60332-1-2.
- Smooth network, Easier work.
- Stable transmission, Higher efficiency.
- High bandwidth, Lower latency.

APPROVAL

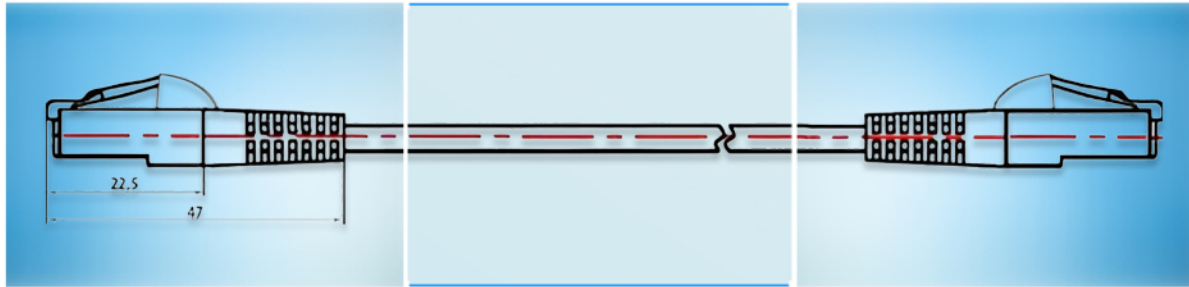
- UL/cUL Listed.
- ETL/3P Certified Category 6 Channel Testing Performance Requirements.



APPLICATIONS

- 10GBASE-T Ethernet.
- 1000BASE-TX/ 1000BASE-T Gigabit Ethernet.
- 100BASE-TX Fast Ethernet.
- 10BASE-TX Ethernet.
- Used in LAN networks and Telephone connections.
- Used in connecting printers and modems to computer.
- Used in Ethernet connections from the slow speed to high-speed data transfers

TECHNICAL SPECIFICATION



Part Number	Description
NS-106UTP-XX-0.30M	Cat 6 UTP Patch Cord 0.30M with 6 Colors (White, Gray, Red, Black, Yellow, Blue)
NS-106UTP- XX-0.50M	Cat 6 UTP Patch Cord 0.50M with 6 Colors (White, Gray, Red, Black, Yellow, Blue)
NS-106UTP- XX-1M	Cat 6 UTP Patch Cord 1M with 6 Colors (White, Gray, Red, Black, Yellow, Blue)
NS-106UTP- GR-2M	Cat 6 UTP Patch Cord 2M Gray
NS-106UTP- XX-3M	Cat 6 UTP Patch Cord 3M with 6 Colors (White, Gray, Red, Black, Yellow, Blue)
NS-106UTP- GR-5M	Cat 6 UTP Patch Cord 5M Gray
NS-106UTP- GR-10M	Cat 6 UTP Patch Cord 10M Gray
NS-106UTP- GR-15M	Cat 6 UTP Patch Cord 15M Gray
NS-106UTP- GR-20M	Cat 6 UTP Patch Cord 20M Gray
NS-106UTP- GR-25M	Cat 6 UTP Patch Cord 25M Gray

Use (XX) to specify color: WH= White, GR=Gray, RD=Red, BL=Black, YL=Yellow, BU=Blue