

# COPPER PATCH PANEL

A PATCH PANEL IN A LOCAL AREA NETWORK (LAN) IS A MOUNTED HARDWARE ASSEMBLY THAT CONTAINS PORTS THAT ARE USED TO CONNECT AND MANAGE INCOMING AND OUTGOING LAN CABLES. IT'S PROVIDES A WAY TO KEEP LARGE NUMBERS OF CABLES ORGANIZED.



## PATCH PANEL 24 PORTS UTP UNLOADED

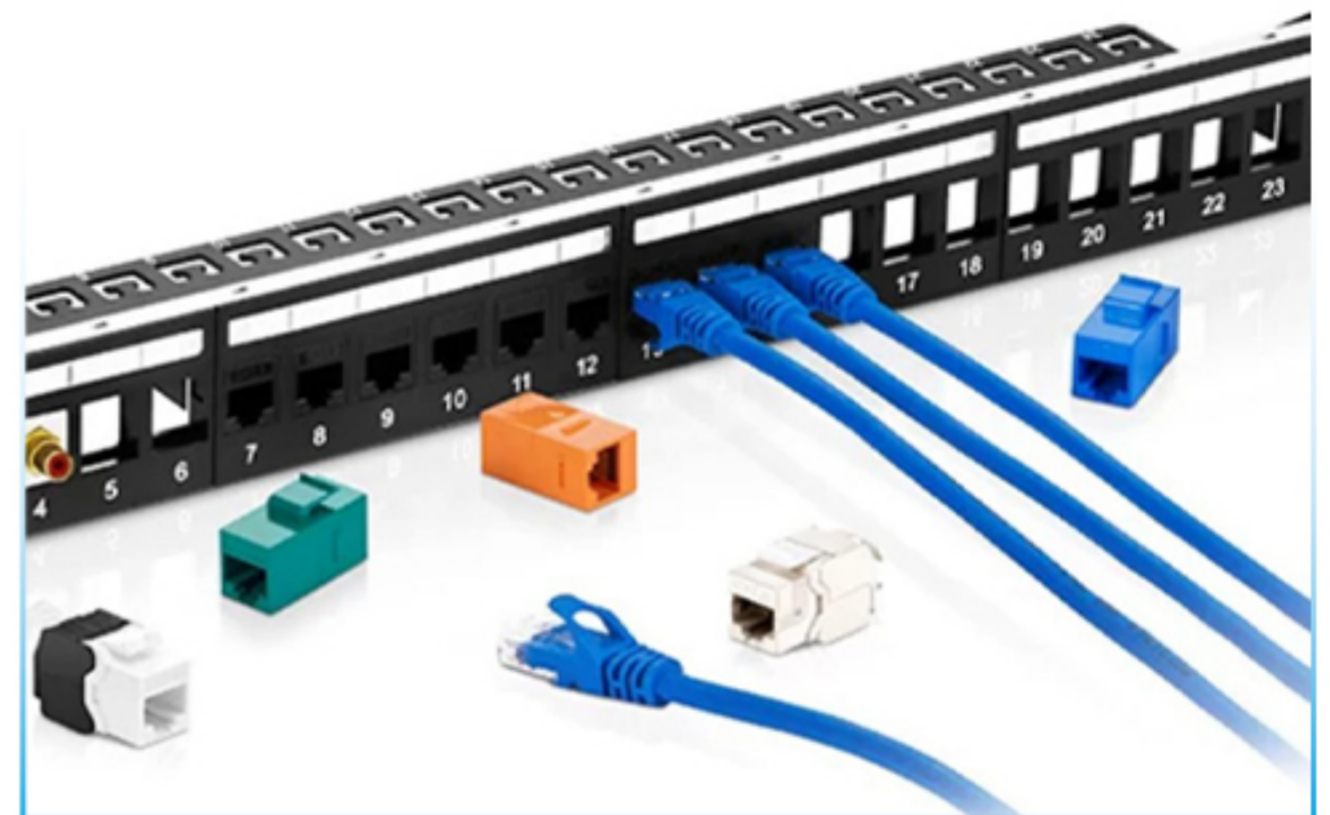
**NS-PP-UTP-UL-24P**

### DESCRIPTION

Patch Panel 24 Ports UTP Unloaded, Unshielded 1U, Suitable for all 19" EIA racks

### OVERVIEW

- 24-port Cat6 patch panel for high density and easy patching solutions in data centres.
- The Cat6 Ethernet patch panel is designed for use in 19" racks and ideal for 10/100/1000 Base-T and 10GBase-T Ethernet applications.
- It bundles the networks together to connect incoming and outgoing lines and improve the organisation of a wired network.
- The clear numbering on the front and back of the network patch panel enables quick and easy identification of cable runs, and the detachable cable management bar keeps Ethernet cables neat and tidy.

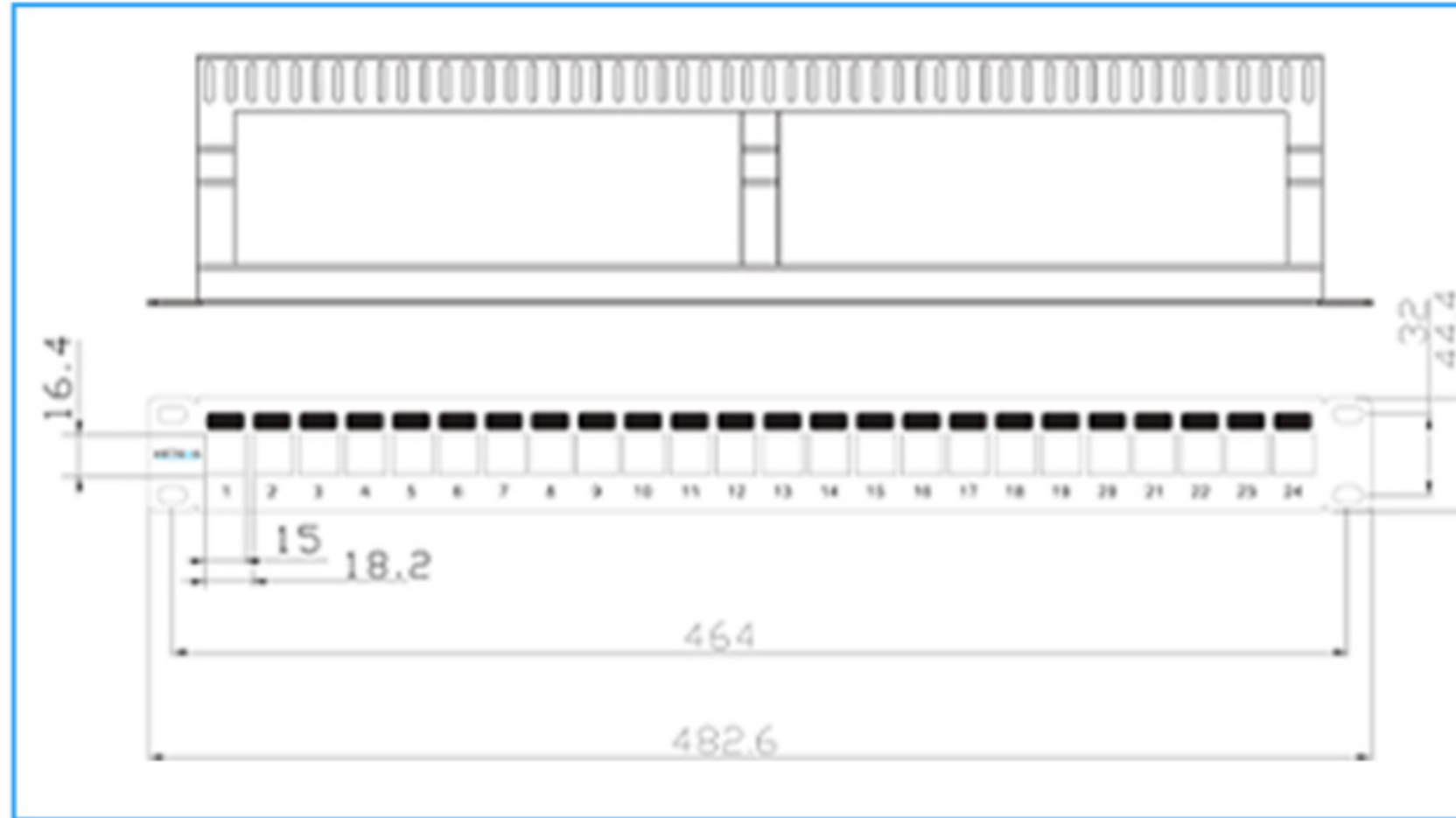
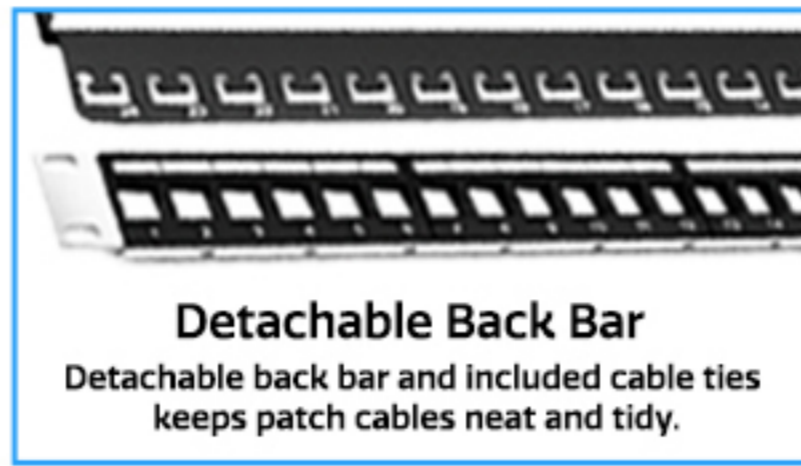
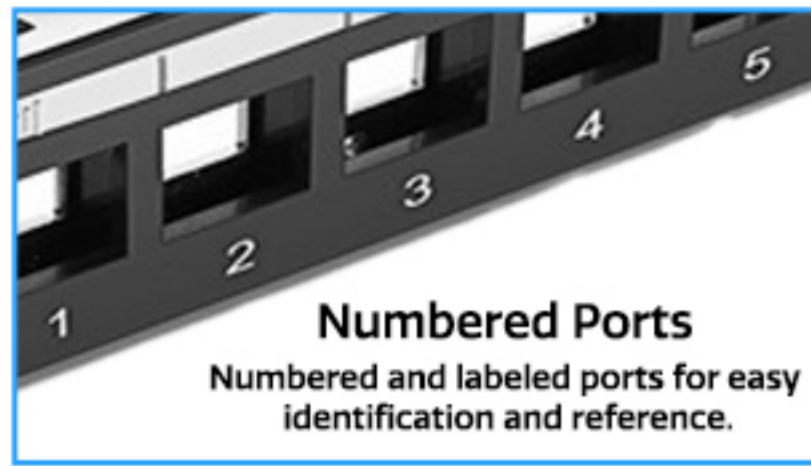


### FEATURES

- Suitable for 90° unshielded slim keystone jacks.
- Suitable for 180° unshielded keystone jacks.
- Wide range of multimedia modules.
- Remarkable position suits for you quick and easy port marking.
- Cable management bar available.
- 24ports high-density design in 1U, suitable for all 19" EIA racks.



# TECHNICAL SPECIFICATION



## DIMENSIONS

- Height: 43.69 mm | 1.72 in,
- Width : 482.6 mm | 19 in,
- Depth : 165.1 mm | 6.5 in,
- Compatible Conductor Gauge, solid : 22 AWG | 24 AWG
- Compatible Conductor Gauge, stranded : 22 AWG | 24 AWG

Category	Shielding Type	Material	Type of Patch Panel	Standard	Dimensions (HxWxD)
Cat5e/Cat6/Cat6a/Cat7	Shielded/Unshielded	SPCC + ABS Plastics	Flat	ISO/IEC11801, TIA/EIA568	1.75"x19"x3.62" (44.5x482.5x92mm)

No. of Ports	No. of Rack Spaces	Color	RJ45 Port Dimension (HxW)	Operating Temperature	Connector Type
24	1U	Black	16.2x14.7mm	-25 °C to +50 °C (-13 °F to +122 °F)	<ul style="list-style-type: none"> <li>• RJ45 Ethernet</li> <li>• HDMI</li> <li>• USB</li> </ul>