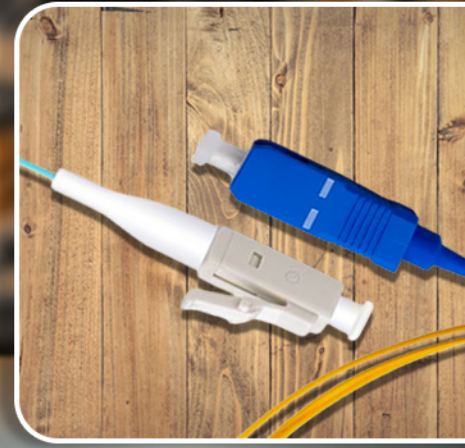


FIBER OPTIC FIBER OPTIC PIGTAILS

FIBER OPTIC PIGTAIL IS A FIBER OPTIC CABLE TERMINATED WITH FIBER OPTIC CONNECTORS AT ONLY ONE SIDE OF THE CABLE. THEY COME IN DIFFERENT TYPES BASED ON CONNECTOR, FIBER TYPE, AND FIBER COUNT.



PIGTAIL LC UPC MULTI MODE OM4 2M 50/125

NS-PL-LC-UPC-OM4-2M

DESCRIPTION

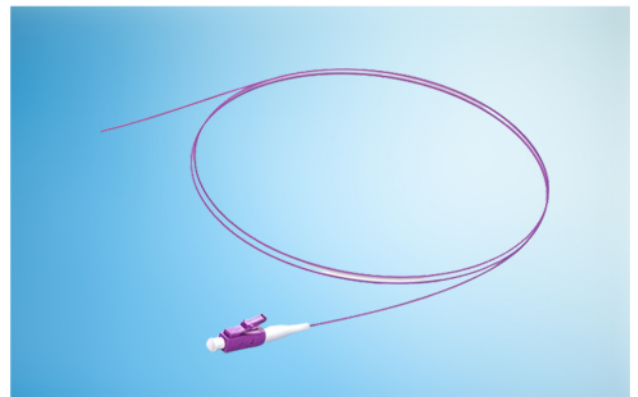
LC-UPC Simplex Fiber Optic Pigtail - 50/125µm Multi Mode OM4 - 0.9mm PVC Jacket - 2 Meters in Total Length

FEATURES

- Tested on optical performance insertion loss and return Loss.
- 0.9mm cable for high density splicing applications.
- Tight buffer for easy fusion or mechanical splicing.
- LC, ST, SC, FC and LSH are available.
- UPC and APC polish type.
- PVC jacket as default, OFNP and LSZH are optional.

STANDARDS COMPLIANCE

- ISO9001 and RoHS Compliant.



STANDARD 900µM BUFFERED FIBER

Fiber optic pigtail is an important component commonly used in fiber optic networks. It has fiber connector at one end, and the other is utilised in terminating fiber optic cables via fusion or mechanical splicing. Feature a typical 900µm tight buffered as default, it is easy for fusion.

TECHNICAL SPECIFICATION

Physical Characteristics	Description
Fiber Count	Simplex
Fiber Mode	Single Mode: OS2; Multimode: OM1/OM2/OM3/OM4
Connector Type	LC/SC/FC/ST/LSH
Fiber Grade	OS2: G.657.A1; OM4/OM3/OM2: Bend Insensitive; OM1: G.651
Cable Jacket	PVC (Riser/OFNR)/LSZH/Plenum (OFNP)
Jacket Color	OS2: Yellow; OM3/OM4: Aqua; OM1/OM2: Orange
Cable Diameter (mm)	0.9/2.0
Minimum Bend Radius (mm)	Single Mode: 30; Multimode: 7.5/15

Optical Characteristics	Description
Insertion Loss (dB)	≤0.3
Return Loss (dB)	SMF: UPC≥50, APC≥60 (LC/SC/ST/FC) UPC≥55, APC≥75 (LSH) MMF: UPC≥30 (LC/SC/ST/FC/LSH)
Wavelength (nm)	SMF: 1310/1550; MMF: 850/1300
Attenuation (dB/km)	SMF: ≤0.36 at 1310nm, ≤0.22 at 1550nm MMF: ≤3.0 at 850nm, ≤1.0 at 1300nm
Operating Temperature	-40°C to 75°C
Storage Temperature	-45°C to 85°C